

Amplify.
mCLASS®
 ★ TEXAS

Ready to Assess, MOY
 December, 2022

Agenda

- MOY Benchmark Window
- Requirements for Dyslexia Screener
- Reports for accessing MOY Data to view Dyslexia flags

2 Amplify

mCLASS

mCLASS TX

Lectura

Universal screening of **foundational literacy skills**, with **language-specific** measures.

Asset-based understanding of a child's biliteracy skills.

Dyslexia Screening in English and Spanish.

Amplify

mCLASS Lectura and DIBELS 8th Edition Skills and Measures

Skill	The ability to...	DIBELS measure	Lectura measure
Phonological Awareness	hear, identify, and manipulate individual sounds in spoken words	Phonemic Segmentation Fluency (PSF)	Fluidez en la segmentación de sílabas (FSS) ¿Qué queda? (QQ)*
Alphabetic Principle and Phonics	map sounds onto letters and blend those sounds into words	Nonsense Word Fluency (NWF) Word Reading Fluency (WRF)	Fluidez en los sonidos de las letras (FSL) Fluidez en los sonidos de sílabas (LSS) Fluidez en la lectura de las palabras (FEP)
Accurate and Fluent Reading	read a text accurately with automaticity and expression	Word Reading Fluency (WRF) Oral Reading Fluency (ORF)	Fluidez en la lectura de las palabras (FEP) Fluidez en la lectura oral (FLO)
Reading Comprehension	make meaning from text	Maze	¿Cuál palabra? (CP) <small>*Optional measure</small>

Dyslexia Requirement

Kindergarten

- EOY Deadline
- Must include measures of
 - Letter Sound Knowledge or Letter Naming Fluency
 - Phonological Awareness

First Grade

- Deadline no later than Jan. 31
- Must include measures of:
 - Word Reading Accuracy or Fluency
 - Phonological Awareness

mCLASS Lectura and DIBELS 8th Edition Skills and Measures

Skill	The ability to...	DIBELS measure	Lectura measure
Phonological Awareness	hear, identify, and manipulate individual sounds in spoken words	Phonemic Segmentation Fluency (PSF)	Fluidez en la segmentación de sílabas (FSS) ¿Qué queda? (OO)*
Alphabetic Principle and Phonics	map sounds onto letters and blend those sounds into words	Nonsense Word Fluency (NWF) Word Reading Fluency (WRF)	Fluidez en los sonidos de las letras (FSL) Fluidez en los sonidos de sílabas (LSS) Fluidez en la lectura de las palabras (FEP)
Accurate and Fluent Reading	read a text accurately with automaticity and expression	Word Reading Fluency (WRF) Oral Reading Fluency (ORF)	Fluidez en la lectura de las palabras (FEP) Fluidez en la lectura oral (FLO)
Reading Comprehension	make meaning from text	Maze	¿Cuál palabra? (CP) <small>*Optional measure</small>

DIBELS measures at each grade level



Measure	Grade K	Grade 1	Grade 2	Grade 3	Grade 4-6
Letter Naming Fluency	✓	✓			
Phonemic Segmentation Fluency	✓	✓			
Nonsense Word Fluency	✓	✓	✓	✓	
Word Reading Fluency	✓	✓	✓	✓	
Oral Reading Fluency		✓	✓	✓	✓
Maze (Basic Comprehension)			✓	✓	✓

Amplify

Additional measures at each grade level



Measure	Grade K	Grade 1	Grade 2
Phonological Awareness - Blending	✓	✓	
Oral Language (Listening Comprehension)	✓	✓	✓
Spelling	*	✓	✓
Vocabulary	✓	✓	✓
RAN	✓	✓	✓

* MOY and EOY only

One of these required for Dyslexia risk indicator.

Amplify

mCLASS Lectura skills and measures



Skill	Measures	K	1	2	3	4-6
Letter Naming	FNL (Fluidez en nombrar letras)	✓	✓			✓ ²
Phonological Awareness	FSS (Fluidez en la segmentación de sílabas)	✓	✓			
	OQ (¿Qué queda?)		✓ ²	✓ ²	✓ ²	
Alphabetic Principle	FSL (Fluidez en los sonidos de las letras)	✓ ¹	✓			
	LSS (Fluidez en los sonidos de sílabas)	✓	✓			
	FEP (Fluidez en palabras)	✓	✓		✓	✓
Fluency	FLO (Fluidez en lectura oral)	✓	✓	✓	✓	✓
Comprehension	CP (¿Cuál palabra?)			✓ ²	✓	✓

◆ Specific to Spanish assessment

¹ K-Inicio option available ² Optional measures

Amplify

Optional measures at each grade level



Measure	Grade K	Grade 1	Grade 2
Lenguaje oral (Listening Comprehension)	✓	✓	✓
Spelling Español	*	✓	✓
Vocabulary Español	✓	✓	✓

Amplify

mCLASS Home

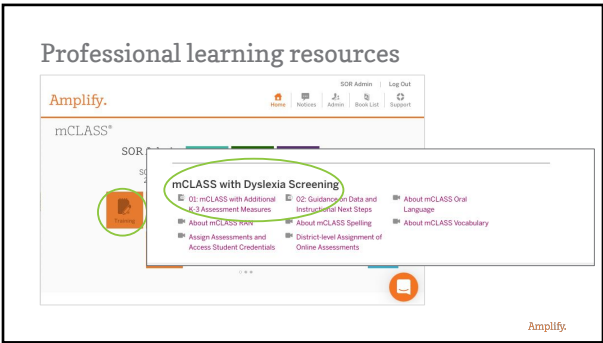
Amplify

Amplify

	Composite	Phonemic Awareness (PAF)	Letter Sounds (LSS/CLS)	Decoding (DSE/DFE)	Word Reading (WRP)	Reading Fluency (RF)
Well Below Benchmark	13% 2 Students	7% 1 Student	27% 4 Students	13% 2 Students	20% 3 Students	27% 4 Students
Below Benchmark	20% 3 Students	20% 3 Students	7% 1 Student	20% 3 Students	13% 2 Students	27% 4 Students
At Benchmark	47% 7 Students	67% 10 Students	47% 7 Students	47% 7 Students	53% 8 Students	27% 4 Students
Above Benchmark	20% 3 Students	7% 1 Student	20% 3 Students	20% 3 Students	13% 2 Students	20% 3 Students
In Progress						

Amplify

Professional learning resources



ECDS 2022-2023 Update

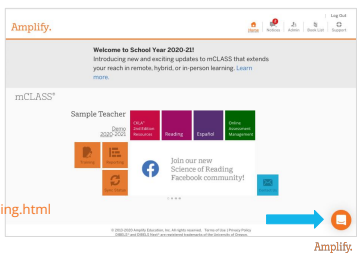
NEW Benchmark Window End Date: January 26

Timeline		
Action by district	Action by Amplify	Time Period
Upload updates SSE file to reflect correct Texas UID	Upload updated SSE file to reflect correct Texas UID	10/19/2022 - 10/31/2022
Data submission through TEA and apply fixes	Files will be uploaded every Tuesday and Thursday with the exception of the last week of January when the uploads will be on Tuesday January 24, 2023 and Thursday, January 26, 2023.	11/7/2022 - 1/26/2023
Final submission to TEA	Final files will be uploaded.	1/26/2023

Program and technical support

- Call** (800) 823-1969
Monday - Friday,
7 am - 9 pm ET
- Chat** Tap the icon
Monday - Friday,
7 am - 9 pm ET
- Email** help@amplify.com

www.kasgrant.net/mclass-training.html



Amplify.

Thank you!